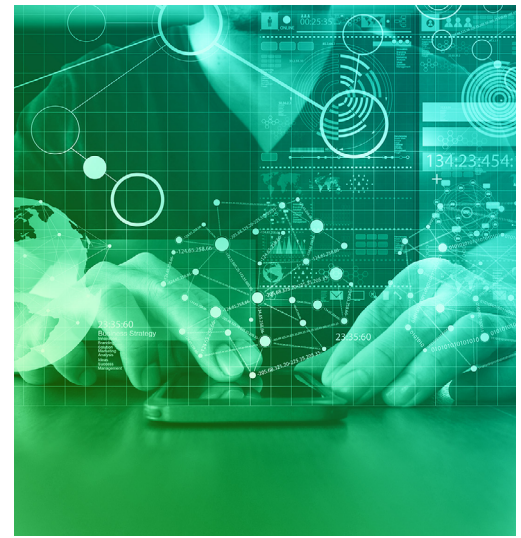


# Proactively Detect Fraud with Connected Intelligence

Jumio's Cross-Transaction Risk capability empowers Jumio customers to detect fraud before it happens by delivering a holistic, network-wide view of user identity. Unlike traditional identity verification solutions that assess individual transactions in isolation, Jumio's Cross-Transaction Risk capability connects identity elements across the Jumio network to reveal patterns of both trusted and fraudulent behavior.

By leveraging a dynamic blend of legitimate user and fraud data, businesses can:

- ✔ **Make faster, more informed decisions** with real-time, enriched insights into user identity history.
- ✔ **Proactively detect and stop fraud** before bad actors gain access.
- ✔ **Reduce operational costs** by automating detailed risk assessments, minimizing manual review and account consolidation.
- ✔ **Enhance user trust** by streamlining onboarding for legitimate users while preventing repeat fraud attempts.



## How It Works



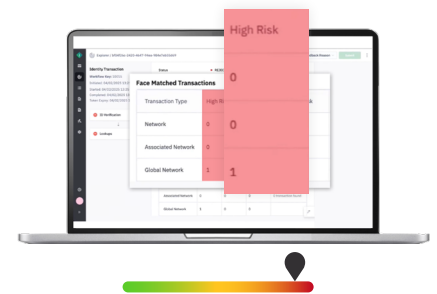
### Cross-Network Intelligence

Provides a broader view of a customer's risk by connecting identity verification data across multiple businesses.



### Real-Time Fraud Detection

Identifies repeat fraud attempts and synthetic identities before damage occurs.



### Automated Risk Assessment

Reduces reliance on additional manual review by flagging medium to high-risk users automatically.

## Key Use Cases



**Fraud Detection:** Detect and block bad actors before they can access your platform.



**Regulatory Compliance:** Strengthen KYC and AML compliance with cross-network intelligence.



**Account Consolidation:** Identify the intentional or unintentional creation of multiple accounts.



**Seamless Onboarding:** Improve the user experience by reducing friction for trusted customers.

Reduce fraud and operational costs while making faster, more informed decisions with Jumio's Cross-Transaction Risk capability.

**Join the Jumio Network Today**

Learn more at [jumio.com](https://jumio.com)